

Enriching People's Lives Through Thoughtful **Life Science Design**



+





LIFE SCIENCE TEAM LEADERSHIP

ID STUDIOS

We are greater than the sum of our parts



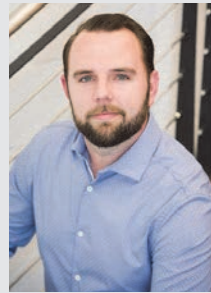
AMY MORWAY
CID, LEED AP
Principal



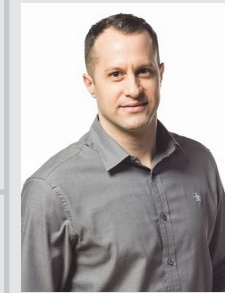
RICH GUERENA
AIA, LEED AP
Associate Principal



GARY HARTILL
AIA, LEED
Principal Lab Planner



MICHAEL MCDONALD
Project Manager



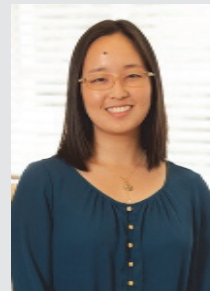
JAMIE HUFFMAN
Lab Planning
Sr. Project Manager



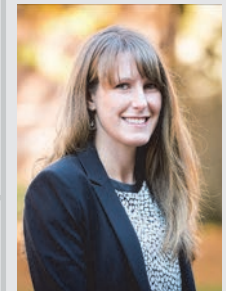
CAROLINA
VANDERPOEL
Job Captain



JENI CHAMPION
CID, NCIDQ
Associate,
Sr. Designer



JANE HOMMA
Lab Planning
Project Architect



JULIE JENSON
Lab Planning
Sr. Designer

Support Staff

Consultants

Support Staff



ID STUDIOS

MEET THE TEAM



Amy Morway



Andrew Fordham



Angelina Ligomina



Carolina Vanderpoel



Dana Field



Deborah Elliott



Gary Hartill



Holly Cogan



Jamie Huffman



Jane Homma



Jeff Erwin



Jeni Champion



Jill Russell-Layman



Julie Jenson



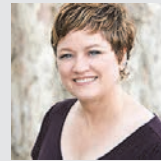
Kassandra Becerril



Kelsey Held



Lauren Zinn



Lila Zubik



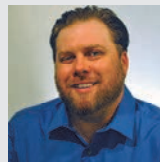
Maegen Curry



Marc Griffin



Michael McDonald



Nate Carter



Rich Guarena



Sophia Dizon

FOCUS AREAS

INCUBATOR / STARTUPS

GROUND-UP

RENOVATIONS

COMMERCIAL RESEARCH LABS

REFRESH

INSTITUTIONAL RESEARCH LABS

TENANT IMPROVEMENT

CORE VALUES

EMPATHY

CREATIVITY

RESPECT

BALANCE

CARE

RELATIONSHIPS

VISION

FAMILY

PROCESS

DEDICATION

JOY

SERVICES

ARCHITECTURE

INTERIOR DESIGN

MASTER PLANNING

SPACE PLANNING

LAB PLANNING

PROGRAMMING

SITE PLANNING

FEASIBILITY STUDIES

FF&E SPECIFICATIONS

GRAPHICS AND BRANDING

REPOSITIONING

ID Studios and ORANGEWALLstudios have formed a partnership specifically in response to the increased demand for highly qualified lab planning/research and cutting-edge workplace design services in the Life Science sector. Whether it be Biotech, Pharmaceutical, Medical Device, Genomics, or any other area of the Life Science industry, we are a solid technical and design force on the west coast.

With over 1.5 Million SF of history in this arena, it is clear that our approach is what makes us an exceptional choice for multiple companies who care both about their technology solutions as well as their people. That includes our relationship-based focus, our deep understanding and implementation of the “wellness” requirement in all facilities, our belief in culture driven solutions, and our collaborative methodology as we explore solutions with our clients.



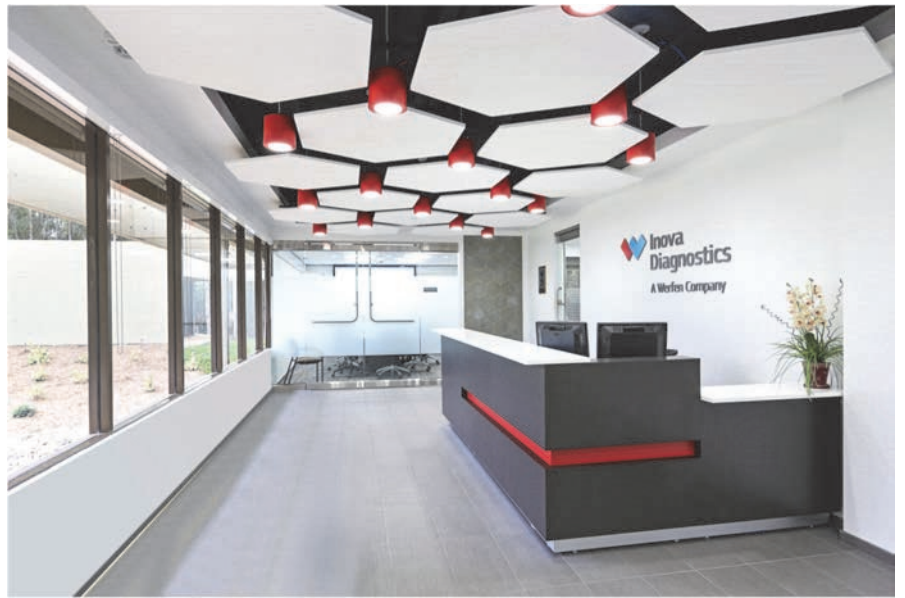
66
Science, Medical & Lab
Projects



15+ YEARS
In Business



“The staff at Inova could not be happier... The new space is a huge improvement and will contribute to the ongoing success of Inova as we grow the company to the next level.”
Eric Austin, Facility Manager
Inova Diagnostics



1.5⁺ mil
s.f.

Science
Medical
& Lab





ID STUDIOS

TEAM EXPERIENCE PROJECT LIST



LIFE SCIENCE

ACADIA PHARMACEUTICALS | DEL MAR, CA

40,000 s.f. Corporate Office at KDCM

ACADIA PHARMACEUTICALS | SAN DIEGO, CA

70,000 s.f. Corporate Office at One Paseo

ADMINISTRATION BUILDING ADA UPGRADES AT OHSU/ONPRC | HILLSBORO, OR

ADA facility assessment and upgrades to the administration building

ASA EMERGENCY VESTIBULE AT OHSU/ONPRC | HILLSBORO, OR

427 s.f. entry vestibule providing ABSL-3 building and effluent decontamination system (EDS) room with emergency washdown and vaporized hydrogen peroxide (VHP) sterilization functions

BEHAVIORAL SUITE RENOVATION NIH G20 AT OHSU/ONPRC | HILLSBORO, OR

1,729 s.f. renovation of ABSL-2 Behavioral Suite including sound and vibration attenuation

BIOMED REALTY TRUST | LA JOLLA, CA

49,000 s.f. Corporate Headquarters

BIOMED REALTY TRUST | SAN DIEGO, CA

38,000 s.f. Corporate Headquarters

BIOMED REALTY TRUST, EXPANSION | SAN DIEGO, CA

8,500 s.f. Corporate Office Expansion

BIOMED REALTY TRUST, REFRESH | SAN DIEGO, CA

First Floor Common Area and Amenity Space Refresh at 4570 Executive Drive

BIOMED REALTY TRUST, ROAD TO THE CURE | SAN DIEGO, CA

31,500 s.f. Public Space, Spec Suite and Spec Lab

BIOMED REALTY TRUST, SATELLITE OFFICE | LA JOLLA, CA

4,500 s.f. Corporate Office

CADENCE PHARMACEUTICALS | SAN DIEGO, CA

25,000 s.f. Test Fit Plans



NEURELIS

CALIFORNIA STATE UNIVERSITY SAN MARCOS, STUDENT HEALTH BUILDING | SAN MARCOS, CA

20,000 s.f. FF&E; Including, Clinical, Health Education, Laboratory, Records and Pharmacy

COLONY ANNEX BUILDING ADDITION NIH CO6 AT OHSU/ONPRC | HILLSBORO, OR

3,276 s.f. ABSL-2/BSL-3 addition to the existing quarantine facility. Full design services including land use planning, cost analysis for this NIH funded project

COLONY ANNEX BUILDING, QUARANTINE RENOVATION NIH CO6 AT OHSU/ONPRC | HILLSBORO, OR

1,696 s.f. ABSL-2 primate housing and minor procedure renovation facility

COOLEY BUILDING FREEZER FARM EXPANSION AT OHSU/ONPRC | HILLSBORO, OR

7,876 s.f. renovation to consolidate campus wide ultra-low freezer storage and increase overall freezer capacity

CRYSTAL BIOSCIENCES | EMERYVILLE, CA

5,000 s.f. Corporate Office

INOVA DIAGNOSTICS | SAN DIEGO, CA

34,000 s.f. Corporate Offices, Instrument & Wet Labs, Warehouse

LIGAND PHARMACEUTICALS | SAN DIEGO, CA

5,000 s.f. Corporate Headquarters

MATRIXCARE | NYC, NY

15,000 s.f. Programming and Test Fits

MERRITT LAB FOR RESTORATIVE DENTISTRY AT OHSU | PORTLAND, OR

1,200 s.f. Wet lab for research of the microbiome in human dysbiotic diseases

MICRO-PET IMAGING CENTER RENOVATION FOR OHSU | PORTLAND, OR

1,250 s.f. Micro-Positron Emission Tomography Imaging Suite with offices serving the adjacent Vivarium

MINOR PROCEDURE ROOM NIH P51 AT OHSU/ONPRC | HILLSBORO, OR

500 s.f. minor procedure serving the ABSL-2 primate housing facility

NEURELIS | SAN DIEGO, CA

14,000 s.f. Corporate Office and Labs

NEXTIVITY | SAN DIEGO, CA

30,000 s.f. Corporate Offices & Labs

NMCS D DRUG LAB | US NAVAL MEDICAL CENTER SAN DIEGO, CA

16,000 s.f. Renovations Including Structural Interior Design (SID)

OHSU/ONPRC DEPARTMENT OF COMPARATIVE MEDICINE BUILDING | HILLSBORO, OR

5,500 s.f. New Office Building, Open Workroom, Multipurpose Training, Locker and Break Rooms

OHSU, OREGON NATIONAL PRIMATE RESEARCH CENTER (ONPRC) | HILLSBORO, OR

322 s.f. Hazardous Materials Storage Building



ID STUDIOS

TEAM EXPERIENCE PROJECT LIST

PACIFIC NORTHWEST CRYP-EM CENTER AT OHSU | PORTLAND, OR
1,877 s.f. Infrastructure Design: (3) new Thermo Fisher Krios Titan Cryo-EM Microscopes, (1) New Arctic Microscope, Low Humidity Lab, Design/ Optimization of new Uninterrupted Power Supply (UPS)

PENS EXPANSION (PRIMATE ENCLOSURE IN A NATURAL SETTING) NIH C06 | HILLSBORO, OR
5,674 s.f. ABSL-2 Primate housing facility. Programming/Grant Development Services @OHSU/ONPRC | Planning, and feasibility study studio with cost estimating for development of NIH C06 Grant

PHYSICAL PLANT STORAGE AND MAINTENANCE BUILDING AT OHSU/ONPRC | HILLSBORO, OR
6,000 s.f. building including land use planning, programming, concept and schematic design and cost analysis for a new facilities service building

RESEARCH BUILDING SPACE PLANNING AT OHSU/ONPRC | HILLSBORO, OR
5,265 s.f. Research Office and Wet Lab Relocation Programming and Space Planning

RESMED | HALIFAX, NS
52,000 s.f. Corporate Offices

SHELTERED HOUSING RENOVATION NIH U42 AT OHSU/ONPRC | HILLSBORO, OR
1,500 s.f. ABSL-2 primate housing facility renovation and modernization for ESPF Program Expansion

SUNEVA MEDICAL | SAN DIEGO, CA
1,000 s.f. Common Area Renovation of Corporate Office

TANDEM DIABETES | SAN DIEGO, CA
250,000 s.f. Test fits and Programming for new Corporate Headquarters

TUNNEL WASH BUILDING RENOVATION NIH P51 AT OHSU/ONPRC | HILLSBORO, OR
2,200 s.f. Renovation to Accommodate new Tunnel Wash Sterilization Facility with Mechanical Upgrades

UCSD, SCRIPPS INSTITUTE OF OCEANOGRAPHY | SAN DIEGO, CA
37,500 s.f. Executive Architect for Three Projects Including Programming, Space Planning, Design, Pricing and Construction Documents for Old and New Scripps Buildings

VACCINE AND GENE THERAPY INSTITUTE IMMUNOLOGY LAB | HILLSBORO, OR
5,560 s.f. Open Plan Immunology Wet-Lab, BSL2 Tissue Culture Lab, Microscopy Lab

VERB SURGICAL | MOUNTAIN VIEW, CA
23,000 s.f. Test Fit, Programming & Design Development for Corporate Headquarters & Lab

VOLLUM INSTITUTE: ENVELOPE UPGRADE AT OHSU | PORTLAND, OR
85,400 s.f. Whole building renovation project to modernize the operating infrastructure of an almost 40 year-old landmark research building

VOLLUM INSTITUTE: FREEMAN NEUROSCIENCE LAB AT OHSU | PORTLAND, OR
3,500 s.f. Programming, Planning, Design and Execution of Neurobiology Lab for incoming Director



DCM COMMONS

PENS PHASE 1 NIH C06 AT OHSU/ONPRC | HILLSBORO, OR
9,780 s.f. Primate Enclosure in a Natural Settings ABSL-2/BSL-3 Facility including Master Planning, Cost Estimating and Design Services for Primate Housing Facility and Service Building including High Pressure/Temperature Wash Facility, Holding Facility

PHARMASSEN | SAN DIEGO, CA
7,200 s.f. Test Fit Plans

PHILIPS VOLCANO CORP | SAN DIEGO, CA
92,600 s.f. Corporate Headquarters, Electronics Lab and Class 100,000 Clean Room

RESMED | SAN DIEGO, CA
250,000 s.f. Corporate Headquarters Including 17,000 s.f. Electronics Lab Space

RESMED AMPHITHEATER | SAN DIEGO, CA
64,000 s.f. Outdoor Renovation, Including Amphitheater, Outdoor Meeting Rooms, Paving and Landscape Coordination

RESMED HEALTHCARE INFORMATICS | SAN DIEGO, CA
50,000 s.f. Corporate Office Renovation

RESMED RENOVATION | SAN DIEGO, CA
100,000 s.f. Corporate Headquarters Refresh & Renovation in 5+ Phases



ID STUDIOS

OFFICE LOCATIONS

SERVING LIFE SCIENCE CLIENTS ON THE WEST COAST



Pacific Northwest

Portland

240 N Broadway, Suite 308
Portland OR 97227

info@orangewallstudios.com

503-227-8100



Bay Area

Oakland

240 Peralta Street, Unit 3
Oakland, CA 94608

info@orangewallstudios.com

503-516-5583



San Diego

236 S Sierra Ave, Suite 110
Solana Beach CA 92075

info@idstudiosinc.com

858-523-9836



Southwest



+



236 S Sierra Avenue, Suite 110, Solana Beach CA 92075
T 858.523.9836 www.idstudiosinc.com

240 N Broadway, Suite 308, Portland OR 97227
T 503.227.8100 www.orangewallstudios.com
